

Adopted children in our survey were:



5x more likely to be temporarily excluded from school*



16x more likely to be temporarily excluded during the first three years of primary school*



20x more likely to be permanently excluded from school*

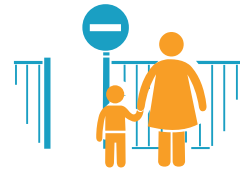


Nearly a **THIRD** of adopted children had **changed schools** because their needs were **not adequately being met***

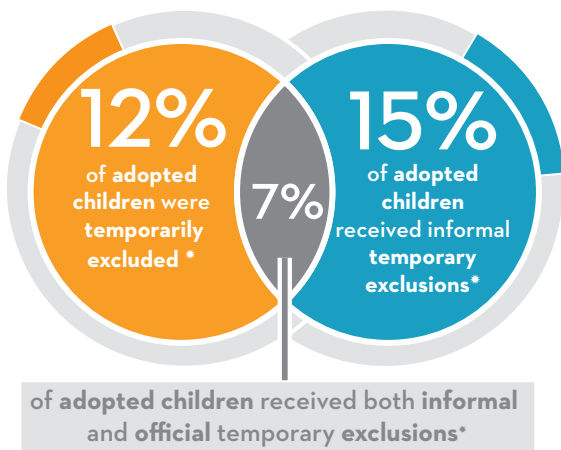


12% of adopted children had been **home educated** because their needs were **not adequately being met** in school*

12% of adopted children and their parents had been **told by their school** that the only way to **avoid a permanent exclusion** was to **voluntarily change schools***



IN 2015-16:



“ Let’s start with what we know, rather than what we think we know. ”
Sir Kevan Collins,
Department for Education’s
‘Evidence Champion’

We are asking for government to collect and analyse data on adopted children in education.

Exclusion and performance statistics for adopted children are not collected and analysed by government. Our survey results indicate that they are more likely to be excluded – temporarily and permanently – than their peers. This impacts adversely on their school performance and ultimately their life chances. Before outcomes can be improved, we must know the extent of the problem.

adopter voice Find out more visit **adoptionuk.org**

*Statistics refer to figures for respondents from all nations who had children in school during 2015-16, compared to DfE figures for England only, 2015-16

*Statistics refer to figures for respondents in England only, who had children in school during 2015-16, compared to DfE figures for 2015-16 for England

*Statistics are based on whole survey figures (all nations, all respondents, all time frames)

*Statistics refer to respondents from all nations with children in school during 2015-16